
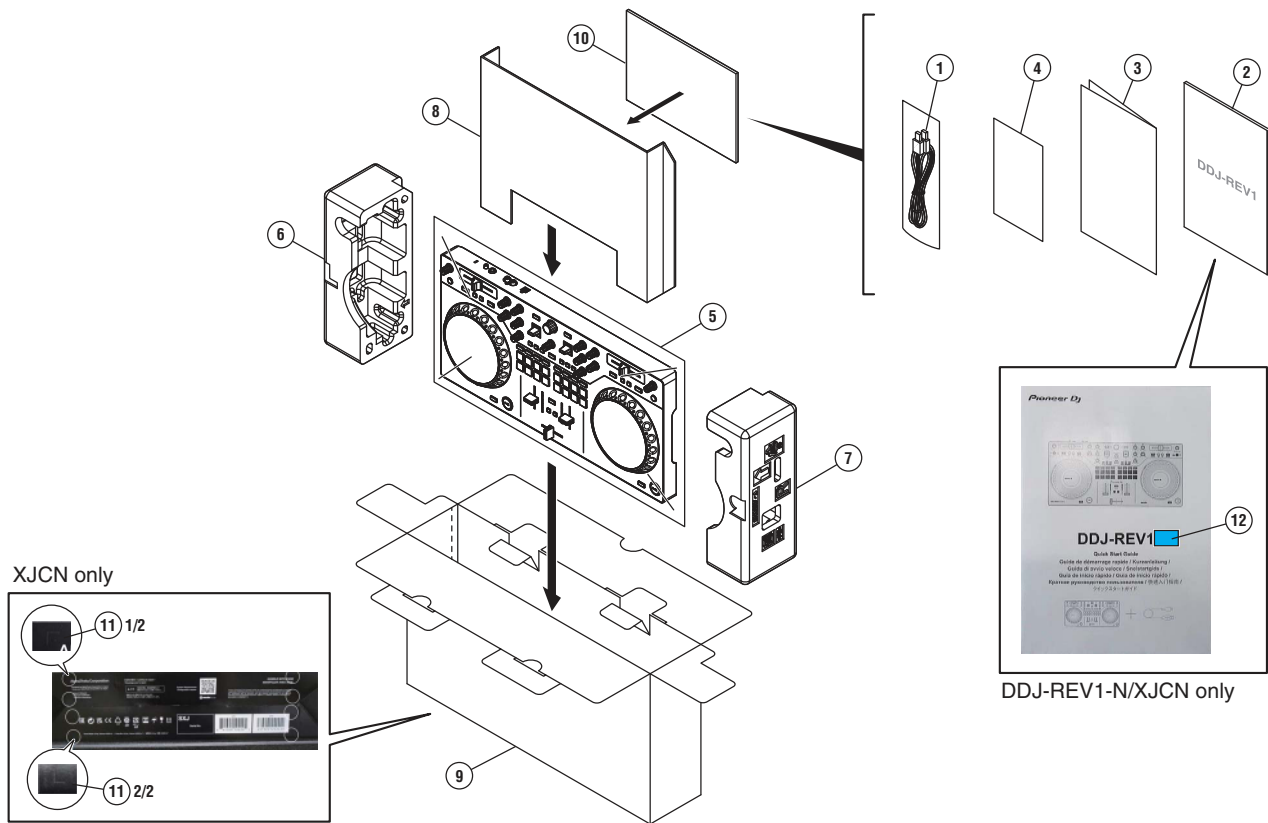


5678

9. EXPLODED VIEWS AND PARTS LIST

- NOTES:
- Parts marked by “NSP” are generally unavailable because they are not in our Master Spare Parts List.
 - The  mark found on some component parts indicates the importance of the safety factor of the part. Therefore, when replacing, be sure to use parts of identical designation.
 - Screws adjacent to ▼ mark on product are used for disassembly.
 - For the applying amount of lubricants or glue, follow the instructions in this manual.
(In the case of no amount instructions, apply as you think it appropriate.)

9.1 PACKING SECTION



(1) PACKING SECTION PARTS LIST

Mark No.	Description	Part No.	Mark No.	Description	Part No.
	1 USB Cable	DDE1150	6	Packing Pad	DHA2016
	2 Quick Start Guide	DRH1667	7	Packing Pad	DHA2017
	3 Sub Manual	See Contrast table (2)	8	Partition	DHC1110
NSP	4 Warranty	DRY1274	9	Packing Case	See Contrast table (2)
	5 Packing Sheet	AHG7053	NSP 10	Polyethylene Bag	AHG7117
			11	Label	See Contrast table (2)
			NSP 12	Label	See Contrast table (2)

(2) CONTRAST TABLE

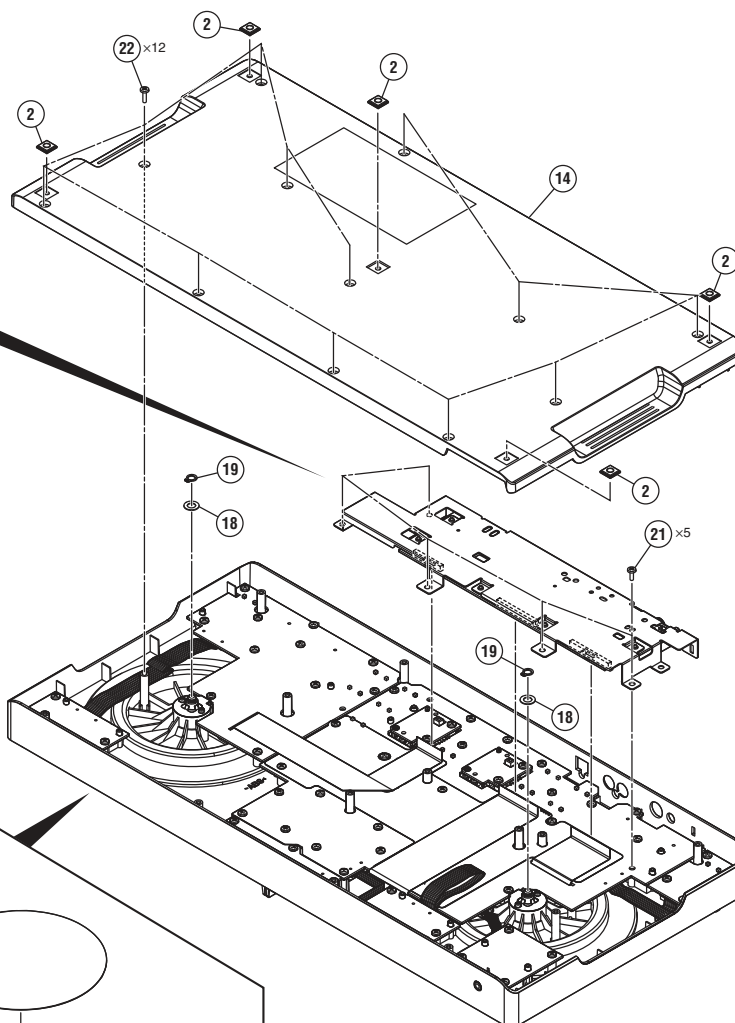
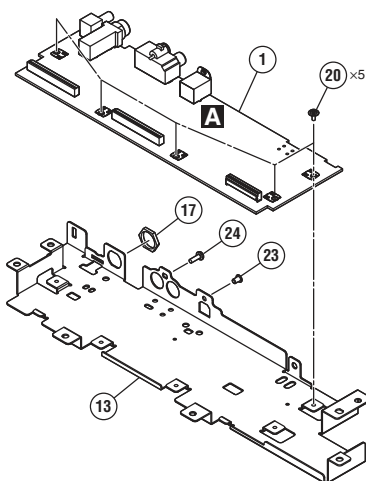
DDJ-REV1/SXJ, XJCN, DDJ-REV1-N/PXJ and XJCN are constructed the same except for the following:

Mark	No.	Symbol and Description	DDJ-REV1/SXJ	DDJ-REV1/XJCN	DDJ-REV1-N/PXJ	DDJ-REV1-N/XJCN
	3	Sub Manual	DRH1668	DRH1669	DRH1686	DRH1669
	9	Packing Case	DHG3833	DHG3833	DHG3839	DHG3839
	11	Label	Not used	DRW3022	Not used	DRW3023
NSP	12	Label	Not used	Not used	Not used	DRW2829

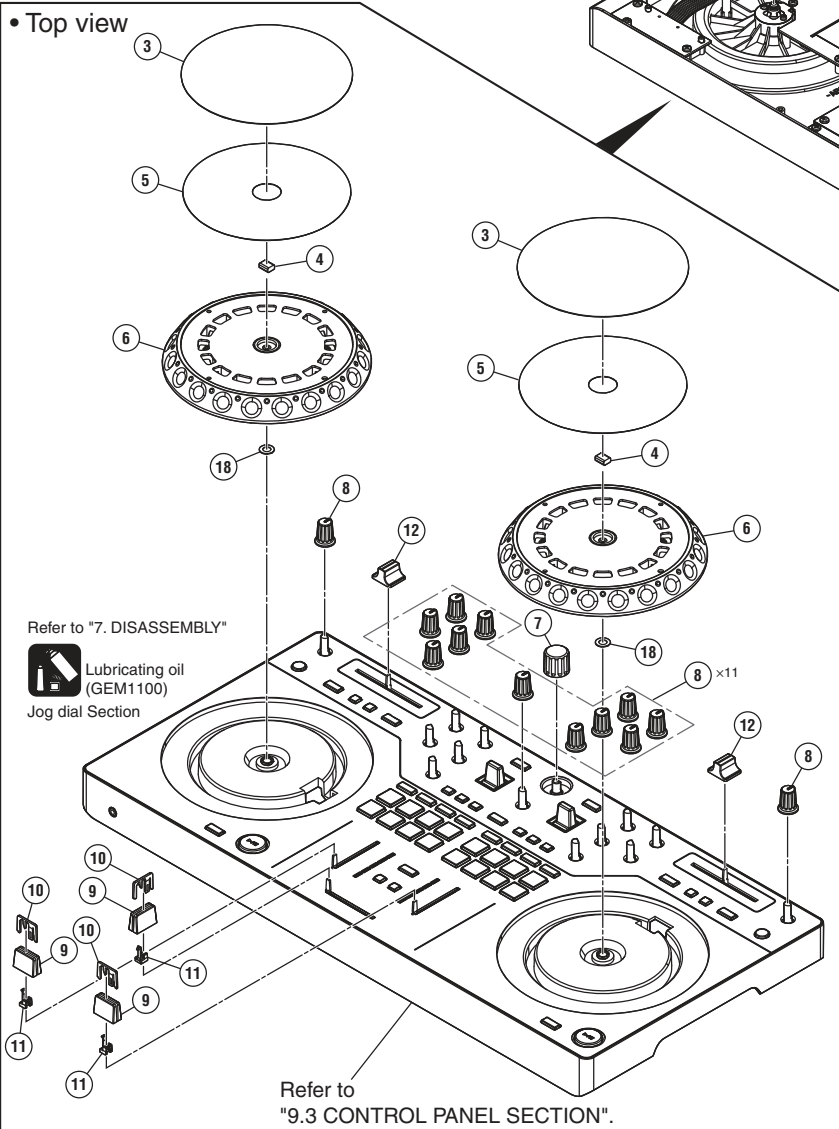
9.2 BOTTOM SECTION

A • Bottom view

• Top view



• Top view



(1) BOTTOM SECTION PARTS LIST

Mark No.	Description	Part No.
1	MAIN Assy	DWX4675
2	Rubber Foot	VEB1349
3	Plate	See Contrast table (2)
4	Gasket/JOG	DEC3539
5	DS Tape	DEH1123
6	Jog Dial	DNK7044
7	Knob	DAA1281
8	Knob/PLS	DAA1324
9	Knob	DAC3539
10	Slider Knob 2	DAC2685
11	Stopper/SLD	DNK6009
12	Knob	DNK6769
13	Stay	DNH3497
14	Chassis	DNK7042
15	
16	
17	Nut (M12)	NKX2FNI
18	Washer	WA62D095D050
19	Washer	YC60FAC
20	Screw	ASZ26P050FTC
21	Screw	BPZ30P080FNI
22	Screw	BPZ30P100FTB
23	Screw (M3*5)	DBA1340
24	Screw	PPZ30P080FTB

(2) CONTRAST TABLE

DDJ-REV1 and DDJ-REV1-N are constructed the same except for the following:

Mark	No.	Symbol and Description	DDJ-REV1	DDJ-REV1-N
	3	Plate	DAH3381	DAH3389

△

F



(1) CONTROL PANEL SECTION PARTS LIST

<u>Mark No.</u>	<u>Description</u>	<u>Part No.</u>
1	MIXR Assy ✕	DWX4681
2	HPJK Assy	DWX4682
3	PNL2 Assy ✕	DWX4685
4	FFC	DDD2082
5	FFC	DDD2083
6	FFC	DDD2084
7	Lever	See Contrast table (2)
8	Lever Spring	DBH1702
9	Brake	DEC3948
10	Lever Cap	DNK5344
11	Base	DNK6470
12	Sheet	DEC3795
13	Packing/TMP	DEC3392
14	Button S (Black)	DAC2663
15	Button/FX	DAC2796
16	Button	DAC3152
17	Button	DAC3098
18	Button	DAC3442
19	Button	DAC3620
20	Button	DAC3621
21	Button	DAC3622
22	Button	DAC3624
23	Button	DEB2089
24	Barrier	DEC4037
25	Lens	DNK6946
26	Plate/CND	DNH3137
27	Control Panel	See Contrast table (2)
28	•••••	
29	•••••	
30	Screw	BPZ30P080FNI
31	Screw	IPZ20P080FTC

✕ The service parts of the MIXR Assy and the PNL2 Assy are supplied with multiple boards connected by jumper leads. The MIXR Assy consists of MIXR, HPVR, PLYL, and CRFD boards connected by jumper leads. The PNL2 Assy consists of PNL2 and PLYR boards connected by jumper leads. These six boards are not supplied by itself as the service parts.

(2) CONTRAST TABLE

DDJ-REV1 and DDJ-REV1-N are constructed the same except for the following:

Mark	No.	Symbol and Description	DDJ-REV1	DDJ-REV1-N
	7	Lever	DAC3627	DAC3629
	27	Control Panel	DNK7043	DNK7064