

5

6

7

8

7. DISASSEMBLY

Note: Even if the unit shown in the photos and illustrations in this manual may differ from your product, the procedures described here are common.

Knobs and Volumes Location

A Dial Knob (DAA1259) ×1

Black

B Rotary Knob L (Black) (DAA1284) ×18

White
Black

C Rotary Knob S2 (B) (DAA1275) ×2

White
Black

D Rotary Knob S (Black) (DAA1262) ×5

White
Black

E Dial Knob S2 (B) (DAA1274) ×4

Black

F Dial Knob S (B) (DAA1273) ×2

Black

H Slider Knob 1 (DAC2684) ×3 + Slider Knob 2 (DAC2685) ×3 + Slider Knob Stopper (DNK5888) ×3

Slider Knob 2

Slider Knob 1

Slider Knob Stopper

White
Black
Gray

G Slide Knob (Metal) (DNK5876) ×2

White
Gray

DDJ-S1

5

6

7

8

37

9.2 EXTERIOR SECTION

A

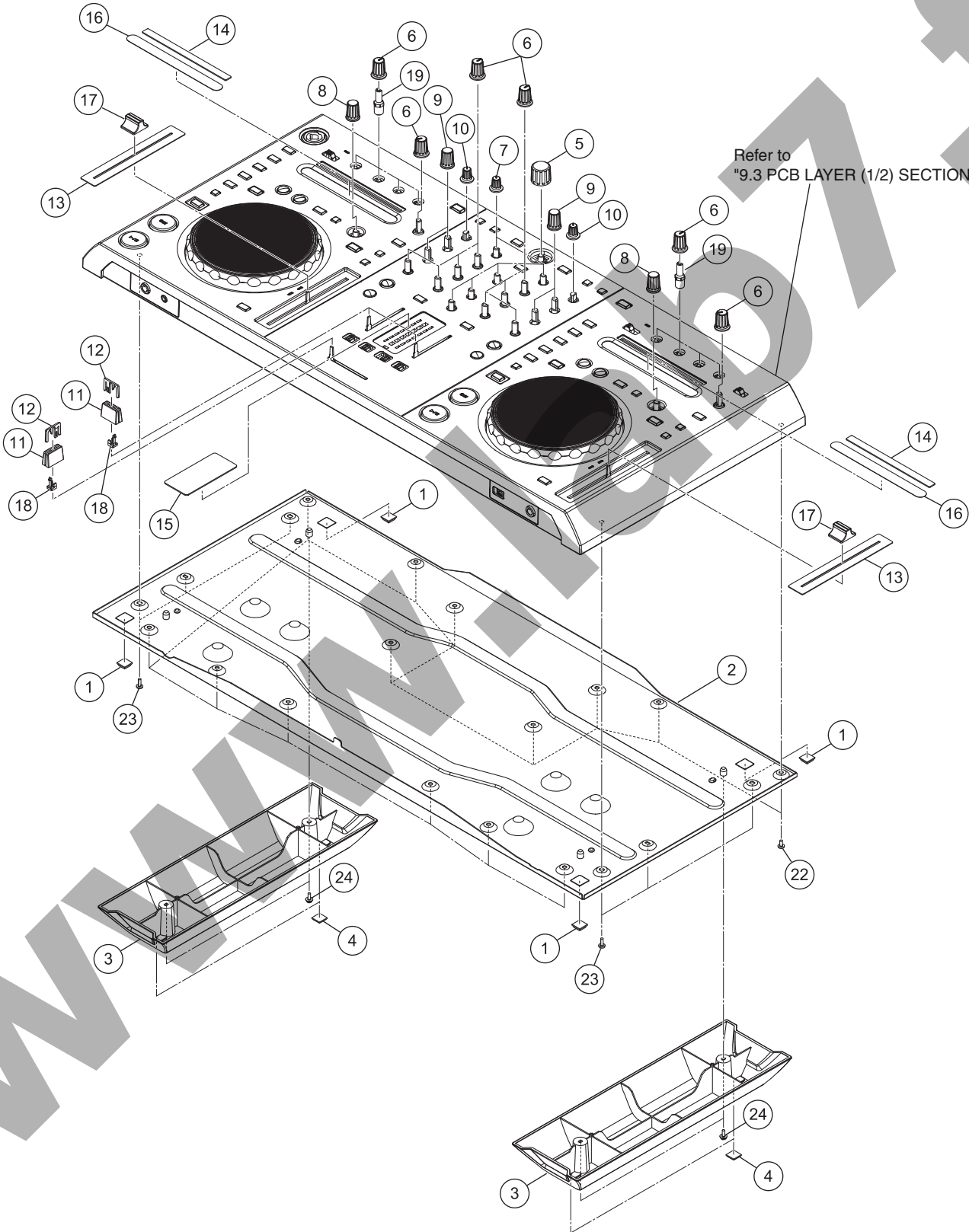
B

C

D

E

F



EXTERIOR SECTION SECTION PARTS LIST

<u>Mark No.</u>	<u>Description</u>	<u>Part No.</u>
1	Rubber Foot (H6)	DEB1996
2	Chassis CU	DNA1425
3	Foot	DNK5864
4	Rubber Foot	VEB1349
5	Dial Knob	DAA1259
6	Rotary Knob L (Black)	DAA1284
7	Rotary Knob S (Black)	DAA1262
8	Dial Knob S (B)	DAA1273
9	Dial Knob S2 (B)	DAA1274
10	Rotary Knob S2 (B)	DAA1275
11	Slider Knob 1	DAC2684
12	Slider Knob 2	DAC2685
13	Slide Sheet 1C	DAH2404
14	Address Plate	DAH2849
15	Level Plate	DAH2851
16	CDC Sheet	DEC3357
17	Slide Knob (Metal)	DNK5876
18	Slider Knob Stopper	DNK5888
19	Shaft/EXT	DNK5980
20	
21	
22	Screw	BBZ30P060FTC
23	Screw	BPZ30P080FNI
24	Screw	PMB30P080FTB

A

B

C

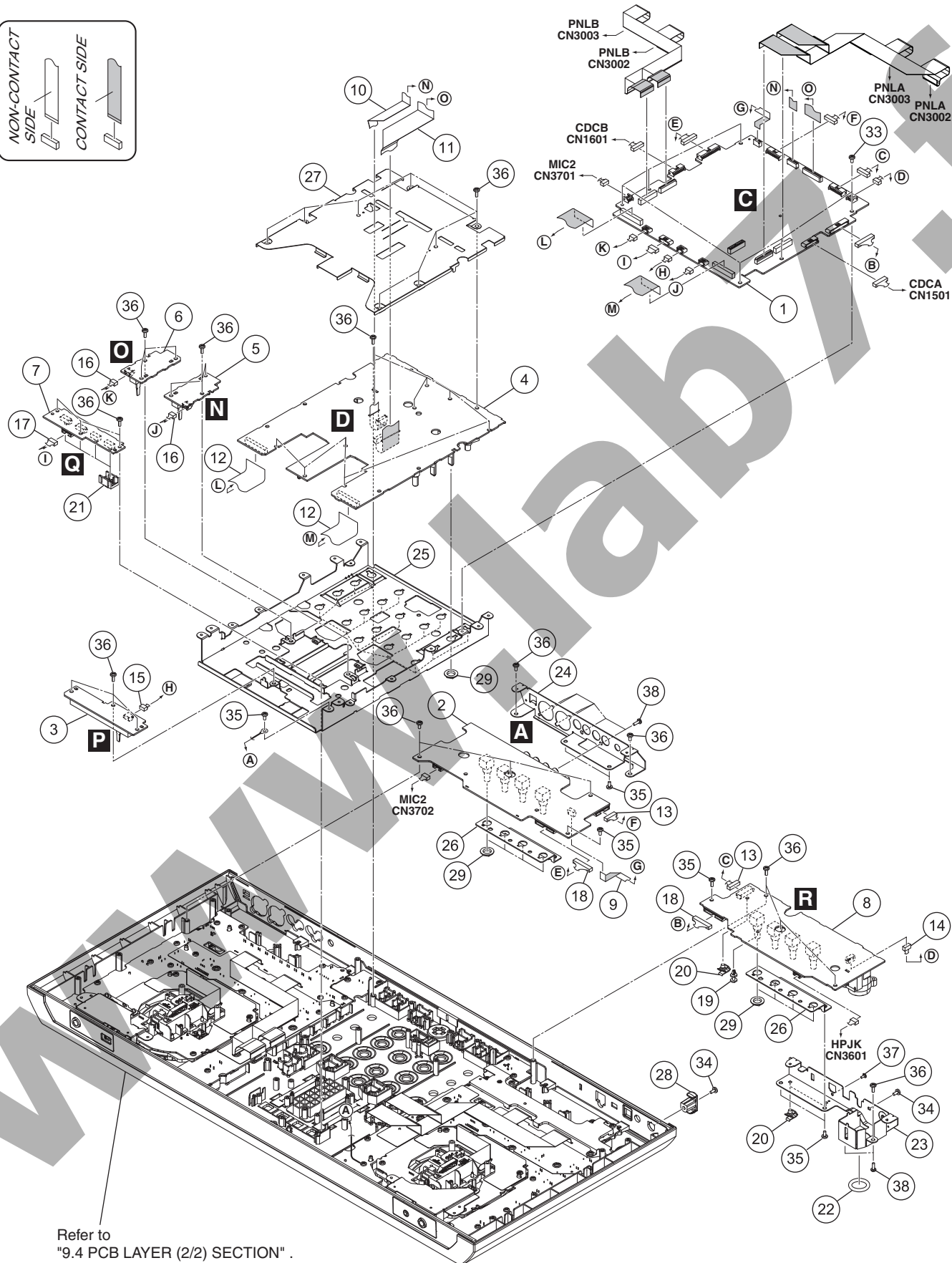
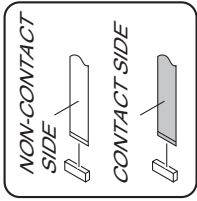
D

E

F

9.3 PCB LAYER SECTION (1/2)

A • Bottom view



Refer to "9.4 PCB LAYER (2/2) SECTION".

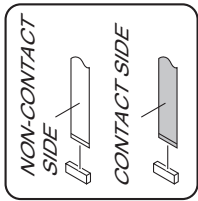
PCB LAYER SECTION (1/2) SECTION PARTS LIST

<u>Mark No.</u>	<u>Description</u>	<u>Part No.</u>
1	MAIN Assy	DWX3227
2	JACK Assy	DWX3230
3	CROS Assy	DWX3246
4	DJMB Assy	DWX3243
5	CHF1 Assy	DWX3244
6	CHF2 Assy	DWX3245
7	MSWB Assy	DWX3247
8	POWB Assy	DWX3248
9	FFC/6P	DDD1562
10	FFC/11P	DDD1572
11	FFC/23P	DDD1573
12	FFC/27P	DDD1574
13	Crimp Connector/9P	DKP3907
14	Crimp Connector/4P	DKP3910
15	Connector Assy	PF03PP-B05
16	Connector Assy	PF03PP-B07
17	Crimp Connector	PF06PP-B05
18	Connector Assy	PF13PP-D07
NSP 19	PCB Spacer	AEC1371
20	Mini Clamp	AEC7507
21	Cap/FDR	DAC2771
22	Blind/MIC	DEC3369
23	Rear Stay L	DNH2969
24	Rear Stay R	DNH2970
25	VR Stay L	DNH2971
26	VR Stay M	DNH2972
27	Shield Plate/M	DNH2983
28	Cord Hook	DNK5928
29	Flange Nut M9	DBN1008
30	
31	
32	
33	Screw	ABZ30P060FTC
34	Screw	BBZ30P060FTB
35	Screw	BBZ30P060FTC
36	Screw	BPZ30P080FNI
37	Screw (M3*5)	DBA1340
38	Screw	PPZ30P080FTB

A
B
C
D
E
F

9.4 PCB LAYER SECTION (2/2)

A • Bottom view



※
 Either the CDCA Assy or CDCB Assy is assembled here.
 The CDCA Assy and CDCB Assy are interchangeably used
 and handled similarly in their production management.

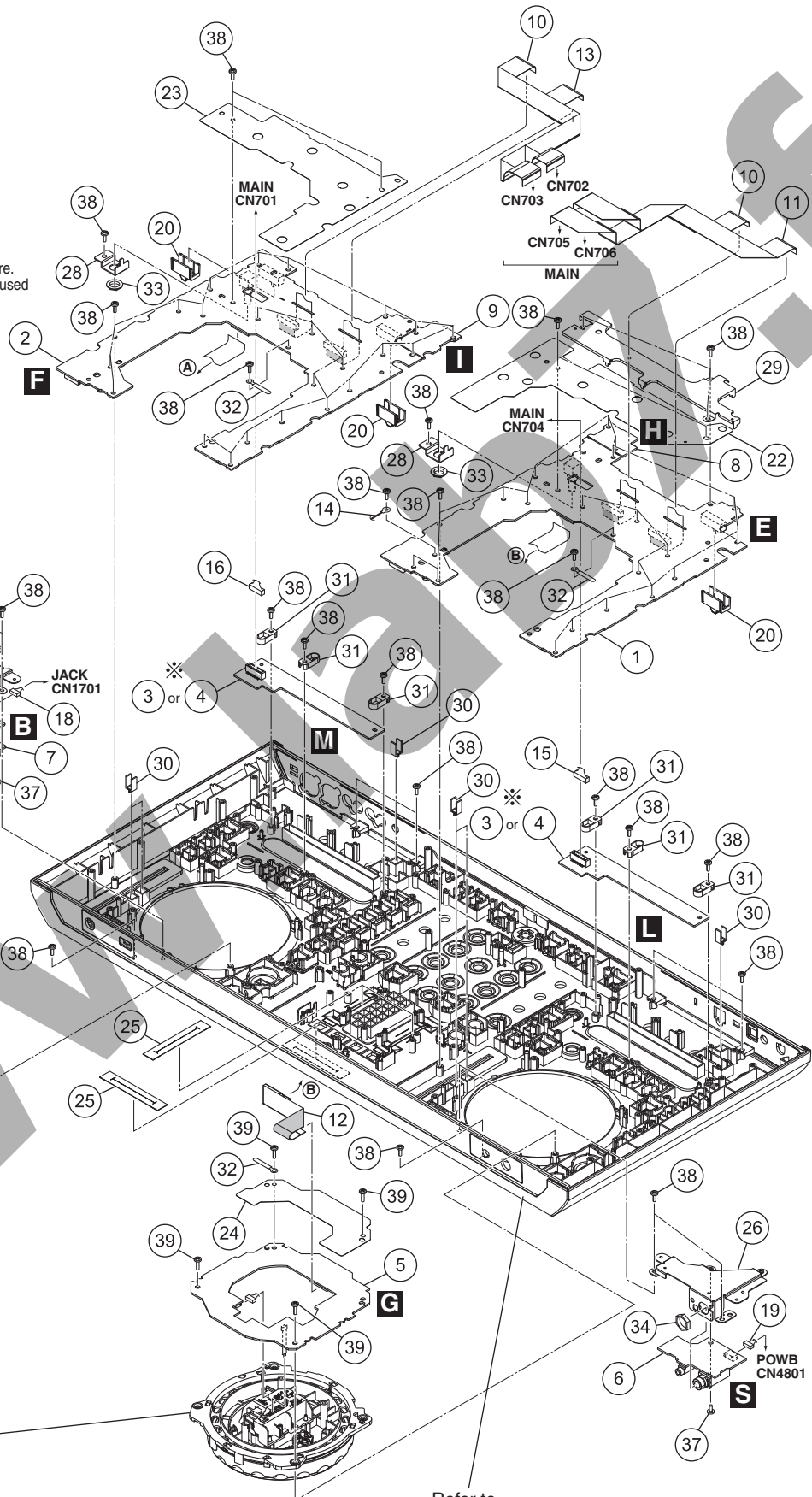
B

C

D

E

F



Refer to
 "9.6 JOG SECTION" .

Refer to
 "9.5 BUTTON LAYER SECTION" .

PCB LAYER SECTION (2/2) SECTION PARTS LIST

<u>Mark No.</u>	<u>Description</u>	<u>Part No.</u>
1	PNLA Assy	DWX3231
2	PNLB Assy	DWX3237
3	CDCA Assy	DWX3228
4	CDCB Assy	DWX3229
5	LEDB Assy	DWX3240
6	HPJB Assy	DWX3241
7	MIC2 Assy	DWX3242
8	LODA Assy	DWX3249
9	LODB Assy	DWX3250
10	FFC/21P	DDD1566
11	FFC/22P	DDD1567
12	FFC/19P	DDD1568
13	FFC/22P	DDD1569
NSP 14	Cord with Plug	DE005VF0
15	Connector Assy	PF08PP-B10
16	Crimp Connector	PF08PP2B20
17	Crimp Connector/3P	DKP3908
18	Crimp Connector/5P	DKP3909
19	Crimp Connector/4P	DKP3911
20	SW Cap	DAC2753
21	Slide Sw Packing (B)	DEC2590
22	FFC Guard A	DEC3358
23	FFC Guard B	DEC3359
24	FFC Guard J	DEC3361
25	Slit/SV	DEC3368
26	Front Stay L	DNH2959
27	Front Stay R	DNH2960
28	VR Stay S	DNH2964
29	Shield Plate/A	DNH2979
30	Lens	DNK5862
31	CDC Stopper	DNK5863
32	Cord Clamper (Steel)	RNH-184
33	Flange Nut M9	DBN1008
34	Nut M12	DBN1018
35	
36	
37	Screw	BBZ30P060FTC
38	Screw	BPZ30P080FNI
39	Screw	BPZ30P100FTB

A
B
C
D
E
F

9.5 BUTTON LAYER SECTION

A

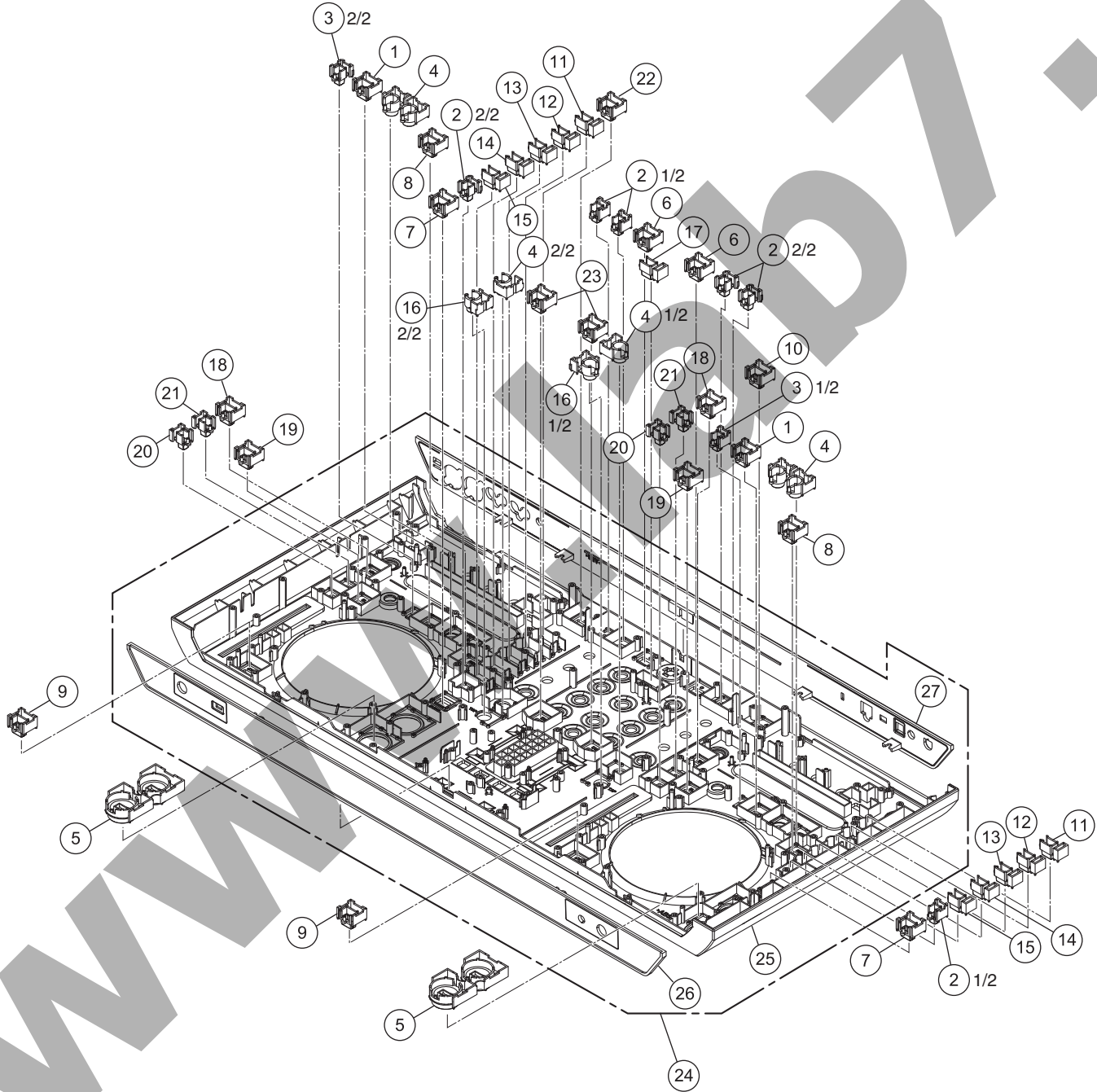
B

C

D

E

F



(1) BUTTON LAYER SECTION PARTS LIST

Mark No.	Description	Part No.	Mark No.	Description	Part No.
1	Button L (Opal)	DAC2657	16	TAP Button	DAC2749
2	Button S (Opal)	DAC2662	17	Button L Opal 1	DAC2750
3	Button S (Black)	DAC2663	18	Vinyl Button	DAC2751
4	Loop Button	DAC2671	19	Slip Button	DAC2752
5	Play Button	DAC2682	20	Button S (Opal) 1H	DAC2754
6	Button L (Black)	DAC2738	21	Button S (Black) 1H	DAC2755
7	Shift Button	DAC2740	22	Load B Button	DAC2756
8	Rev Button	DAC2741	23	CUE Button	DAC2757
9	Sync Button	DAC2742	24	1..Panel Assy/SY	See Contrast table (2)
10	Load A Button	DAC2743	25	2..Control Panel	DNK5930
11	HC1 Button	DAC2744	26	2..Front Panel	DNK5931
12	HC2 Button	DAC2745	27	2..Rear Panel SY	See Contrast table (2)
13	HC3 Button	DAC2746			
14	HC4 Button	DAC2747			
15	HC5 Button	DAC2748			

(2) CONTRAST TABLE

DDJ-S1/SVYXJ8, UXJCB, FLPXJ, KXJ5 and AXJ5 are constructed the same except for the following:

Mark	No.	Symbol and Description	DDJ-S1/ SVYXJ8	DDJ-S1/ UXJCB	DDJ-S1/ FLPXJ	DDJ-S1/ KXJ5	DDJ-S1/ AXJ5
	24	1..Panel Assy/SY	DXB2112	DXB2111	DXB2111	DXB2116	DXB2114
	27	2..Rear Panel SY	DNK5932	DNK5933	DNK5933	DNK5937	DNK5935

9.6 JOG SECTION

1

2

3

4

A

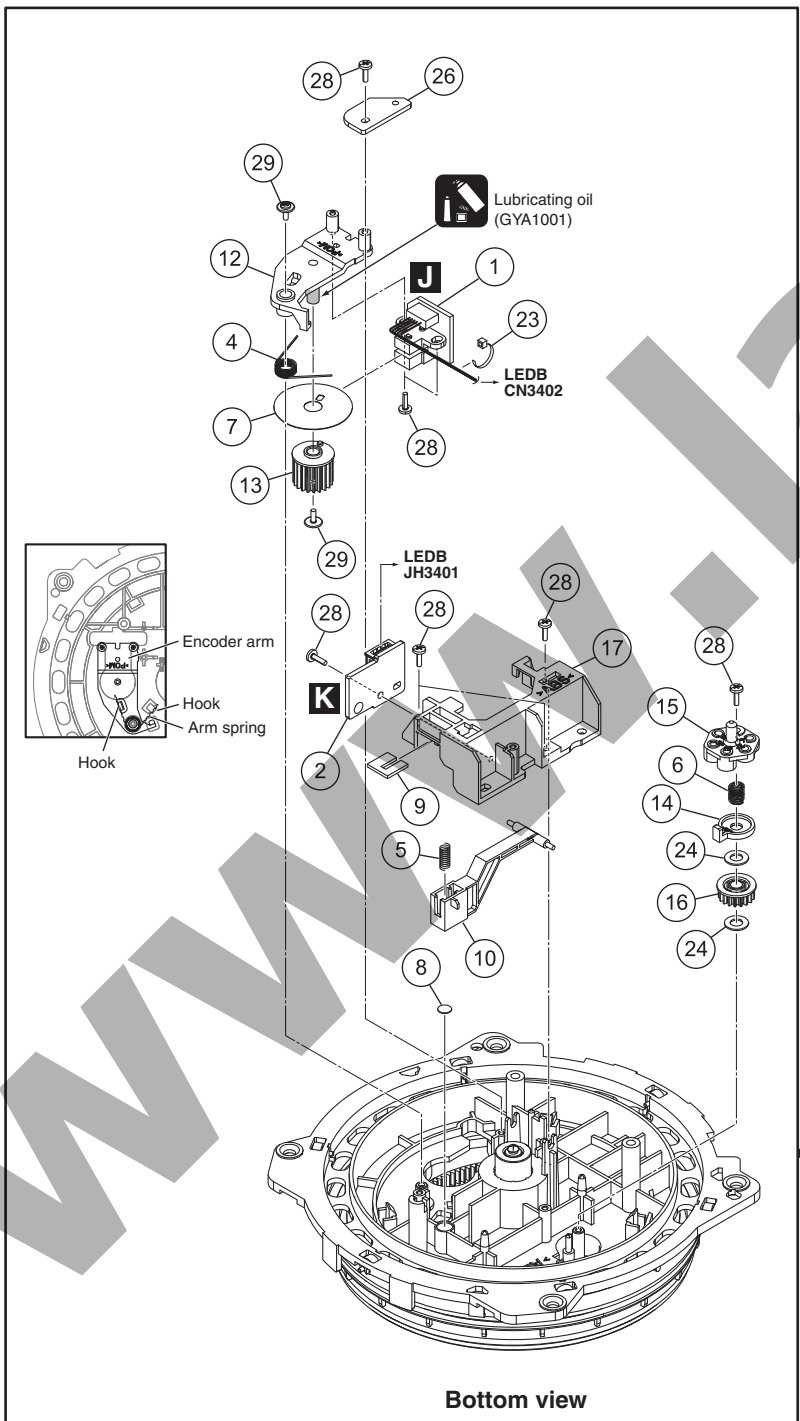
B

C

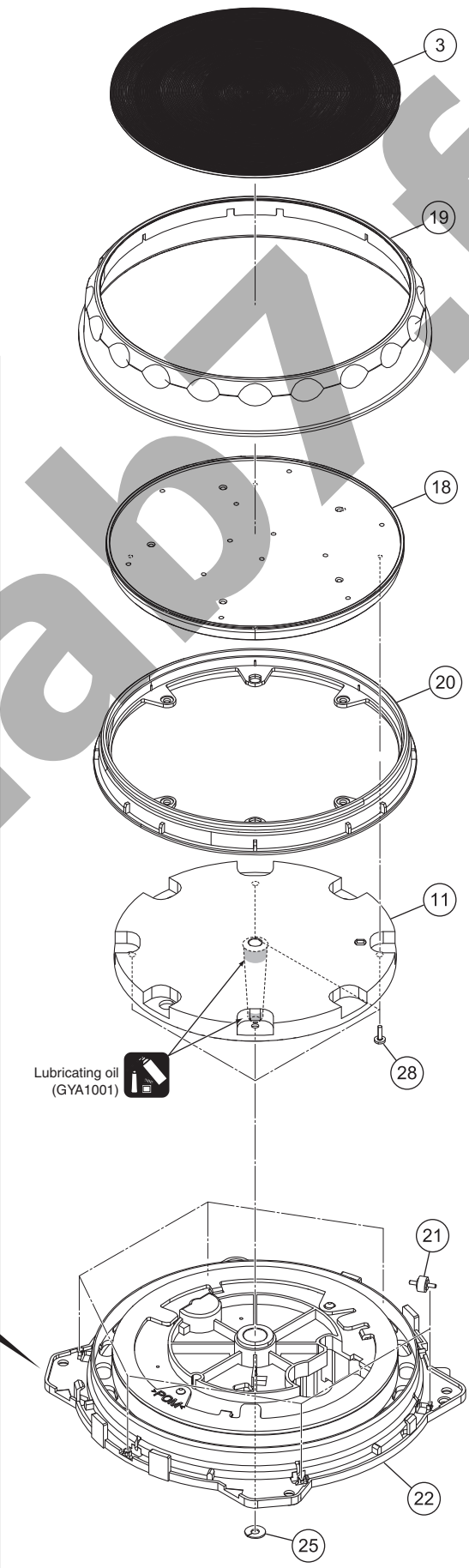
D

E

F



Bottom view



1

2

3

4

5 ■ ■

JOG SECTION PARTS LIST

<u>Mark No.</u>	<u>Description</u>	<u>Part No.</u>
1	JOGB Assy	DWX3238
2	TCHB Assy	DWX3239
3	JOG Plate	DAH2858
4	Arm Spring	DBH1612
5	Lever Spring	DBH1626
6	Load Spring	DBH1676
7	Encoder Plate	DEC2889
8	Lever Cushion (A)	DEC3001
9	Lever Cushion (B)	DEC3002
10	JOG Lever	DNK4763
11	JOG Shaft	DNK4934
12	Encoder Arm	DNK4936
13	Encoder Gear	DNK4937
14	Load Smoother	DNK4939
15	Adjust Plate	DNK4943
16	Load Gear	DNK5178
17	Lever Holder	DNK5206
18	JOG Dial A	DNK5860
19	JOG Dial B	DNK5861
20	Ring Lens	DNK5945
21	Roller B Assy	DXB1877
22	JOG Holder Assy	DXB2002
23	Binder	ZCA-SKB90BK
24	Washer	WA41D070D025
25	Washer	WT32D080D050
26	STPB Assy	DWX3280
27	•••••	
28	Screw	BPZ20P060FTC
29	Screw (FE)	DBA1265

A
B
C
D
E
F